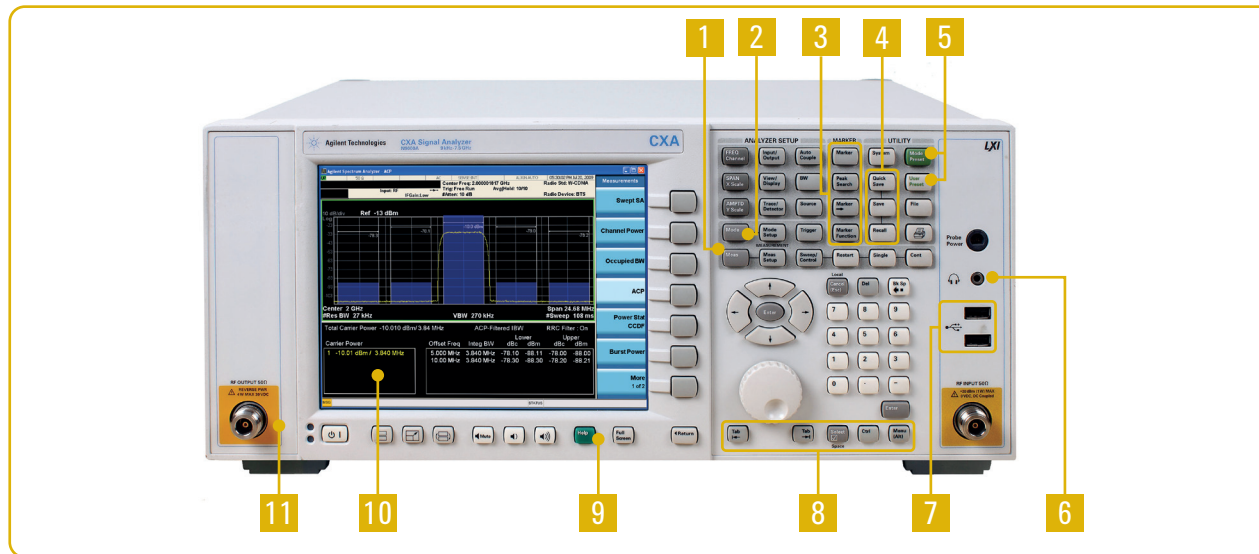
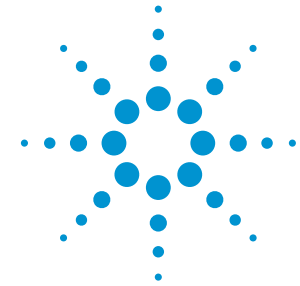


## Quick Fact Sheet

# Agilent N9000A CXA Signal Analyzer

Set new price/performance benchmark in signal analysis

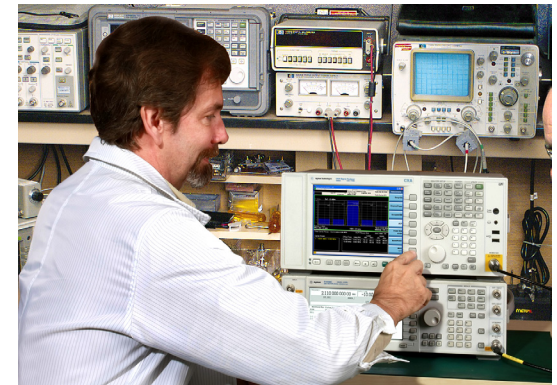


### Front panel

1. Built-in power suite for easy one-button power measurements
2. MODE key allows user to switch between measurement application
3. Comprehensive marker functions for specific measurements
4. Save and recall the instrument state, display image, or measurement data
5. Customize instrument presets
6. Ear-jack for AM/FM tune and listen
7. Connect USB devices through convenient front-panel ports
8. PC function keys allow operation without a mouse or keyboard
9. Help: Context-sensitive help to answer questions quickly
10. Bright, high-resolution 21.4 cm XGA color display for easy signal identification
11. Built-in tracking generator for low-cost scalar network analysis

### Key features

- Fast measurement speed and reliable testing results help you maximize the throughput and production output capacity
- Superior RF performance in general spectrum analysis and scalable measurement applications help you find new insights in signal analysis faster and easier
- Powerful measurement applications help you stay ready for your next test challenge



### Expect more

Be ready for your next challenge in manufacturing test, product development, and RF education. The Agilent N9000A CXA signal analyzer is a versatile, low-cost tool for essential signal characterization. It helps you accelerate product testing and development on multiple levels: cost reduction, throughput, design enhancement, and beyond. Get essential capability along with X-Series expandability in the CXA—and expect more.



**Agilent Technologies**

# Quick Fact Sheet

## Agilent N9000A CXA Signal Analyzer

Key specifications	Description
Frequency ranges	9 kHz to 3.0 GHz (Option 503) 9 kHz to 7.5 GHz (Option 507)
Absolute amplitude accuracy (95th percentile)	± 0.5 dB
Displayed average noise level (DANL) at 1 GHz	-150 dBm, -163 dBm with preamp on
Third-order intermodulation distortion (TOI) at 1 GHz	+17 dBm
Phase noise (1 GHz, 10 kHz offset)	-102 dBc/Hz
W-CDMA ACLR dynamic range	63 dB 66 dB, noise correction on
Analysis bandwidth	10 MHz standard, 25 MHz optional
Resolution bandwidths	1 Hz to 3 MHz (10% steps); 4, 5, 6, and 8 MHz
Video bandwidths	1 Hz to 3 MHz (10% steps); 4, 5, 6, 8, and 50 MHz
Trace points (all spans)	1 to 40,001

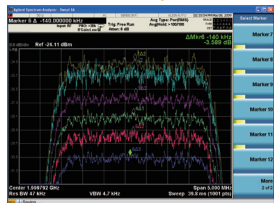
### Recommended service options

Additional two years of Return-to-Agilent warranty  
 Additional two years of Return-to-Agilent calibrations  
 For more information go to [www.agilent.com/find/removealldoubt](http://www.agilent.com/find/removealldoubt)

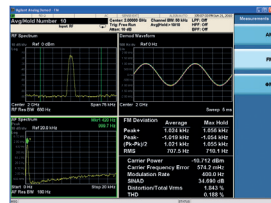
Model	Ordering number
Frequency range options	
Frequency range, 9 kHz to 3.0 GHz	N9000A-503
Frequency range, 9 kHz to 7.5 GHz	N9000A-507
Hardware options	
Preamplifier, 3 GHz	N9000A-P03
Preamplifier, 7.5 GHz	N9000A-P07
Tracking generator, 3 GHz	N9000A-T03
Tracking generator, 6 GHz	N9000A-T06
Precision frequency reference	N9000A-PFR
Fine resolution step attenuator	N9000A-FSA
25 MHz analysis bandwidth	N9000A-B25
Portable configuration	N9000A-PRC
Optional features	
Basic precompliance EMI	N9000A-EMC
Enhanced display package	N9000A-EDP
External source control	N9000A-ESC
Measurement applications	
<b>General purpose</b>	
Spectrum analyzer	Standard
Analog demodulation	W9063A-2FP
Phase noise	W9068A-2FP
Noise figure	W9069A-1FP
EMC	W6141A-2FP

Model	Ordering number
Measurement applications (continued)	
<b>General purpose (continued)</b>	
MATLAB signal analysis software	N6171A
Pulse measurement software	N9051A
VXA vector signal and WLAN modulation analysis	W9064A
89600B vector signal analysis (VSA) software	89601B
<b>Wireless connectivity</b>	
802.16 OFDMA	W9075A-2FP
Bluetooth®	W9081A-2FP
<b>Cellular communications</b>	
W-CDMA	W9073A-1FP
HSDPA/HSUPA	W9073A-2FP
HSPA+	W9073A-3FP
GSM/EDGE	W9071A-2FP
EDGE Evolution	W9071A-3FP
TD-SCDMA	W9079A-1FP
HSDPA/HSUPA/8PSK	W9079A-2FP
cdma2000®/cdmaOne	W9072A-2FP
1xEV-DO	W9076A-1FP
<b>Digital video</b>	
CMMB	W6158A-2FP
DVB-C (J.83 Annex A/C)	W6152A-2FP
J.83 Annex B	W6152A-3FP
DTMB (CTTB)	W6156A-2FP
DVB-T/H	W6153A-2FP
DVB-T2	W6153A-3FP
ISDB-T	W6155A-2FP
ISDB-Tmm	W6155A-3FP

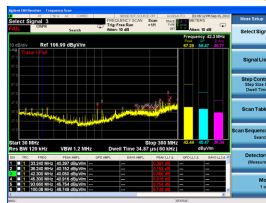
### All the usability innovations of the X-Series are available in the new low-cost CXA signal analyzer



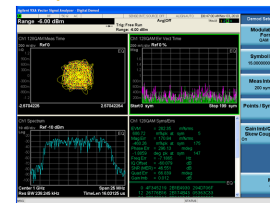
Power suite (spectrum emission mask)



Analog demodulation measurement application



EMC measurement application



VXA vector signal and WLAN modulation analysis

Bluetooth and the Bluetooth logos are trademarks owned by Bluetooth SIG, Inc., U.S.A. and licensed to Agilent Technologies, Inc.

cdma2000 is a US registered certification mark of the Telecommunications Industry Association.

